

**IP-COM**  
World Wide Wireless

# G5328F

L3 Managed Switch

# G5328F

## L3 Managed Switch

---

### Products Description

G5328F is an IP-COM Layer-3 managed switch. To meet the demand of high-performance access, the switch provides 24 10/100/1000 Mbps Base-T Ethernet ports and 4 separate 1000 Mbps Base-X SFP ports. With an innovative hardware structure and software platform, it features a powerful processing capacity and complete security protection mechanism, making management and maintenance easy and simple, fully meeting the demands of high-density user access and high-performance aggregation, ideal for the aggregation layer or core layer of such medium to large networks as enterprises and campuses.



## Key Feature

- Comply with IEEE 802.3, IEEE 802.3u, IEEE 802.3ab, IEEE 802.3ad, IEEE 802.3z, IEEE 802.3x, IEEE 802.1p, IEEE 802.1q, IEEE 802.1w, IEEE 802.1d, IEEE 802.1s standards
- 24 x 10/100/1000 Base-T Ethernet ports, 4 separate 1000 Base-X SFP ports
- 16 K MAC address table and MAC address auto-learning
- 12Mb large cache queue
- Supports abundant services, such as static routing, DHCP server, VLAN, IGMP, ACL, SNMP and Telnet
- Built-in 6 kV professional lightning protection power, 19 inch/1 u standard rack-mounted design

## Product Features



### 6 kV professional lightning protection

Built-in professional lightning protection circuit, support 6KV port lightning protection, effectively reduce the damage caused to the network system by thunderstorms, and improve the robustness of the system.



### Layer-3 routing protocol

Supports Layer-3 static routing protocol, meeting the demand of the 3-layer networking environment in which Layer-3 networks should be interconnected while Layer-2 networks should be isolated, thus realizing an efficient and fast layer-3 routing forwarding.



### 12M large buffer

Provides a large 12Mb cache, which can meet the network application requirements of large traffic bursts such as engine search, IPTV, P2P download, and no packet loss during traffic bursts.

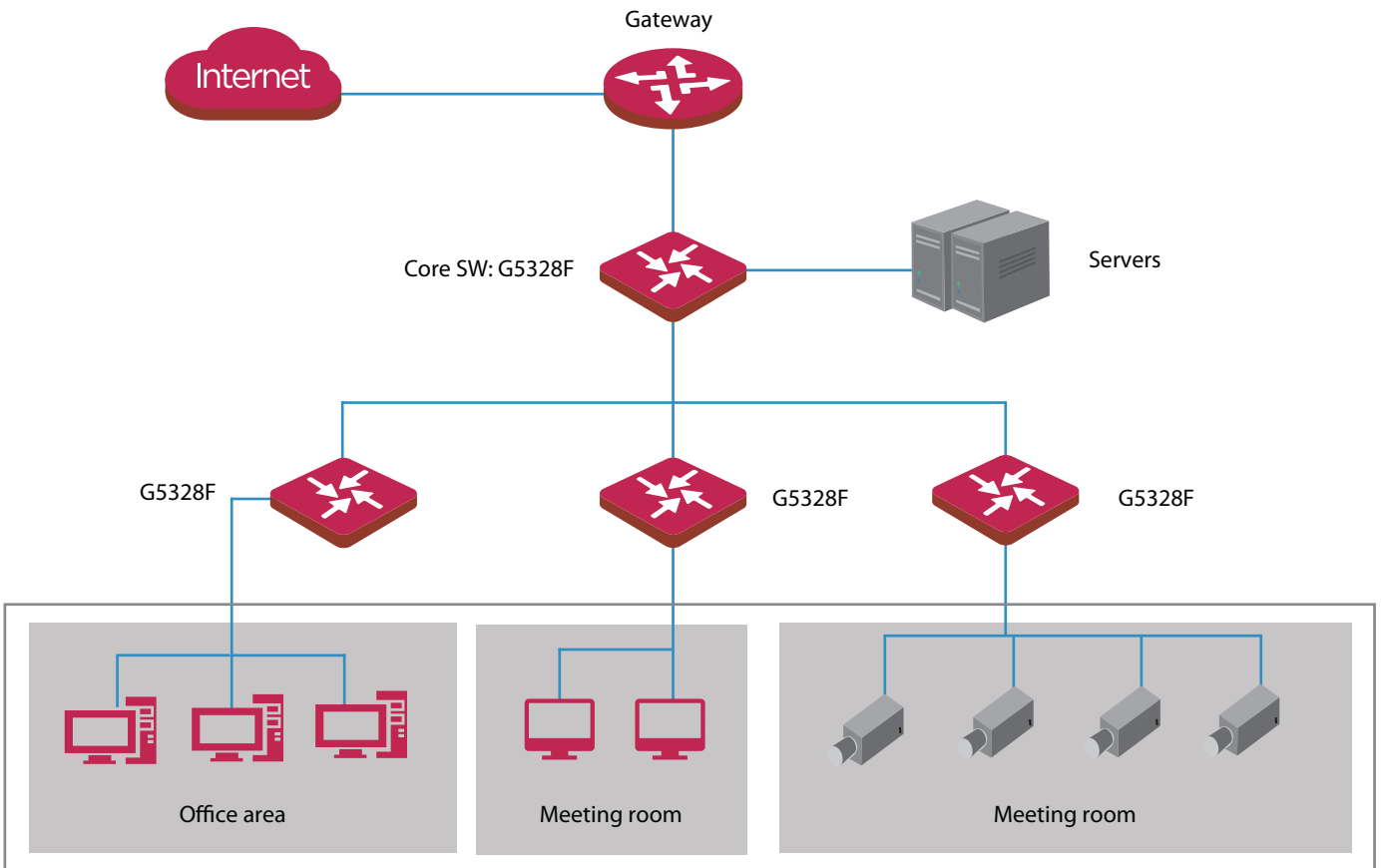


### Sound security features

Supports IP address filtering, MAC address filtering, ARP filtering, DoS attack defense, and ACL access control list, improving network security.

# Application Scenarios

- 1G fiber
- 1G copper cable
- 100M copper cable



Product Model		G5328F
Hardware specifications		
Network standards	IEEE802.3、IEEE802.3u、IEEE802.3ab、IEEE802.3ad、IEEE802.3z、IEEE802.3x、IEEE802.1p、IEEE802.1q、IEEE802.1w、IEEE802.1d、IEEE802.1s	
LED indicators	One Link/Act LED indicator for each port One Power LED indicator for each device One SYS LED indicator for each device	
Fixed ports	24 x 10/100/1000 Base-T Ethernet ports 4 x 1000 Base-X SFP ports	
Port lightning protection	≥6 kV	
Forwarding mode	Store-and-forward	
MAC address table	16K	
Input voltage	DC: 12V 2A AC: 100-240V ~ 50/60Hz	
Dimensions ( L x W x H )	440 mm x 178.8 mm x 44 mm	
Operating environment	Operating temperature: 0°C - 45°C. Storage temperature: -40°C - 70°C Operating humidity: (10% - 90%)RH, non-condensing Storage humidity: (5% - 90%)RH, non-condensing	
Software specifications		
Security features	ARP receiving limit Unknown MAC address discard DoS attack defense 802.1x security authentication	
VLAN	IEEE 802.1Q VLAN VLAN Layer-3 interfaces Supports three port modes: Access, Trunk and Hybrid	
DHCP	DHCP Server DHCP Relay DHCP Snooping Supports Option 82 policy configuration	
L3 Routing	VLAN-based routing IPv4 static routing Static ARP adding/deleting Supports ARP aging time configuration	

Port aggregation	Static aggregation LACP dynamic aggregation
Spanning tree	IEEE 802.1d STP (Spanning Tree Protocol) IEEE 802.1w RSTP (Rapid Spanning Tree Protocol) IEEE 802.1s MSTP (Multiple Spanning Tree Protocol) Supports edge port Supports BPDU statistics
Multicast	IGMP Snooping V1/V2/V3 Supports port fast leave
Port Mirroring	Supports N: 1 port mirroring
QoS	SP (Strict Priority) SWRR (Simple Weighted Round Robin) WRR (Weighted Round Robin) Supports 802.1p port trust mode Supports DSCP port trust mode Supports a maximum of 8 queue service quality mapping
ACL	Supports MAC ACL and IP ACL
Loading and upgrade	Supports FTP/TFTP/HTTP upgrade Supports configuration import and export
Management and maintenance	Telnet, Console SNMP V1/V2/V3 WEB management and maintenance Ping/Tracert/Connection Detection
Cloud management	Supports ProFi App management

**IP-COM**  
World Wide Wireless

## Headquarters

IP-COM Networks Co.,Ltd.

Tel: +86 755-27653089

Fax: +86 755-27657178

Email: [marketing@ip-com.com.cn](mailto:marketing@ip-com.com.cn)

Website: [www.ip-com.com.cn](http://www.ip-com.com.cn)

ADD: Tower E3, No1001, Zhongshanyuan Road, Nanshan District, Shenzhen, China.

Copyright©2016 IP-COM Networks Co., Ltd. All Rights Reserved.

